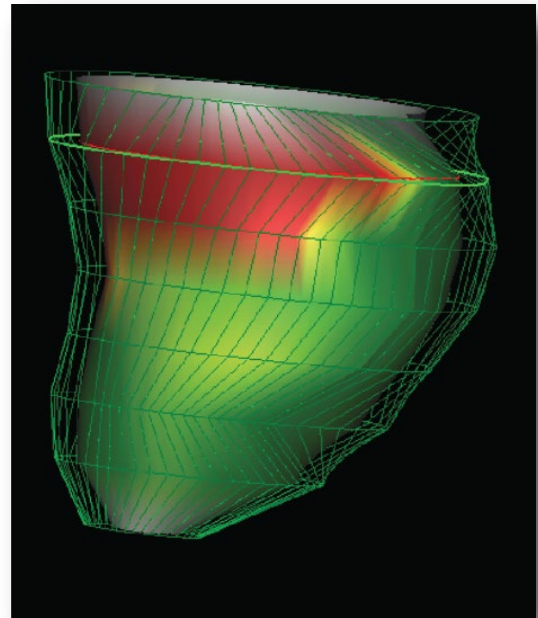


cvi42 Enables Physicians to Work Seamlessly and Safely During COVID-19 Pandemic

June 2, 2020 - Leading cardiovascular diagnostics, Circle CVI's imaging platform, cvi42, is the best-in-class cardiovascular imaging reading and reporting solution for cardiac MR, cardiac CT, cardiac Interventional Planning and Electrophysiology. Annually, millions of cardiac exams - in over 1,000 hospitals and in more than 50 countries - are interpreted using cvi42.

Notwithstanding the state-of-the-art design, what sets cvi42 apart is the support offered by Circle CVI's 24/7 global team and the strong desire to help and grow the cardiac imaging community. Through strong partnerships, Circle CVI provides some of the leading medical facilities the tools and support they need to create world class services. One of these centres is Diagnóstico da América S.A. (DASA) with Professor Dr. Marly Uellendahl (Médica especialista em ressonância e tomografia cardíaca) and their Magnetic Resonance department.



3D Strain in Fabry Disease

DASA has been intensively working with Cardiac MRI and Circle CVI for approximately 10 years and sees around 400 patients a month across Brazil. Currently DASA is conducting research into Fabry Disease, Hypertrophic Cardiomyopathy, Chagas Disease and Scleroderma. Most frequently requests for MRI are made to assess structural heart disease in patients with arrhythmias to investigate Arrhythmogenic Right Ventricle Cardiomyopathy, yet often other complex pathologies are found and diagnosed.

**“ cvi42 certainly offers physicians a work condition
with higher precision and accuracy. ”**

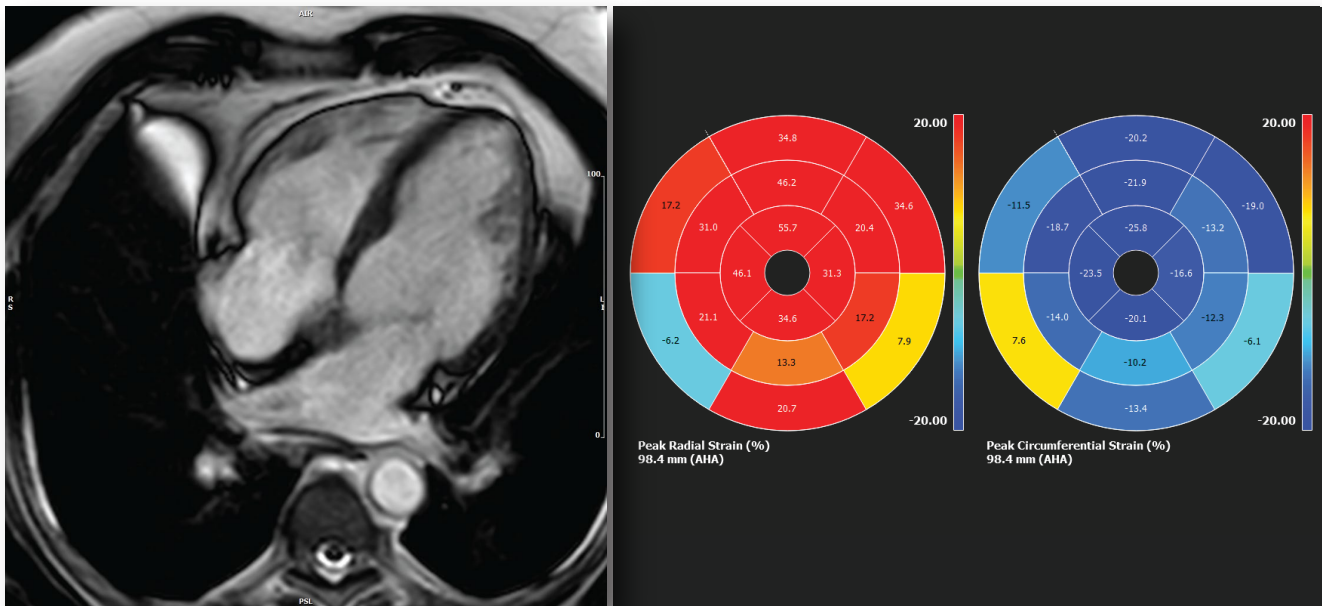
Dr. Uellendahl described that “DASA was looking for a high cutting edge technology tool to analyse our CMR exams” and using cvi42 provided the patients and hospital the benefit of “accurate [qualitative] assessment of heart function, perfusion, and tissue characterization analysis.”

The latest version of cvi42 is automated with embedded AI to reduce analysis time and streamline cardiovascular reading and reporting for fast, accurate and highly reproducible cardiac assessment. It is the experience of DASA that “cvi42 does increase productivity and saves time... chiefly for the evaluation of ventricular function and quantifying myocardial fibrosis.”

With the global Pandemic of SARS-Cov2 in 2020, the communicability of the virus and imposed global social distancing measures threatened access to cardiac MRI through a combination of increase risk of performing the exams through contact and ongoing exposure to Healthcare Professions required to report on these exams. Circle CVI was able to provide additional licenses to several hospital systems (including DASA) to be able to continue their vital work even whilst at home via secure a connection. This allowed DASA to limit the number of staff needed to acquire the scan whilst the qualified team of CMR readers could analyses and report the exams whilst in isolated conditions.

Dr. Uellendahl noted that these “remote licenses have been helpful and useful to continue our work, once we can process the images safely from our homes,” and whilst still having full access to the best-in-class cvi42 tools they were able to “safely report exams without comprising on quality or speed”. Furthermore, this remote access allowed for the analysis and submission of 5 clinical case reports for the upcoming RSNA conference based upon their research which “would have not been possible without this type of remote access to the exams via cvi42.”

In summary, Dr. Uellendahl believed that “cvi42 certainly offers physicians a work condition with higher precision and accuracy” and gave thanks to Circle CVI for continued support and for “giving us the opportunity to be working with cvi42 from our homes in a safe way during the COVID-19 pandemic period.”



Fabry Disease with Cardiac Involvement

Radial and Circumferential Strain Values in Fabry Disease